



# api.sendmode.co.za

## HTTP Post/Get Guide V8

Revised 01 Dec 2012



## 2. API Specification

### 2.1 Overview

The page can be referenced at <http://api.sendmode.co.za/httppost.aspx>

All functions require the following information:

- Type
- Username
- Password

The "Type" defines what function you wish to execute.

The output is XML based and will always contain the following:

```
<api_result>
  <call_result>
    <result>True</result>
    <error />
  </call_result>
</api_result>
```

The result will either be "True" or "False".

If the result is "False" the error will be displayed with the "error" tag.

#### Important

Where XML data is passed the data between the xml tags should be URL encoded.

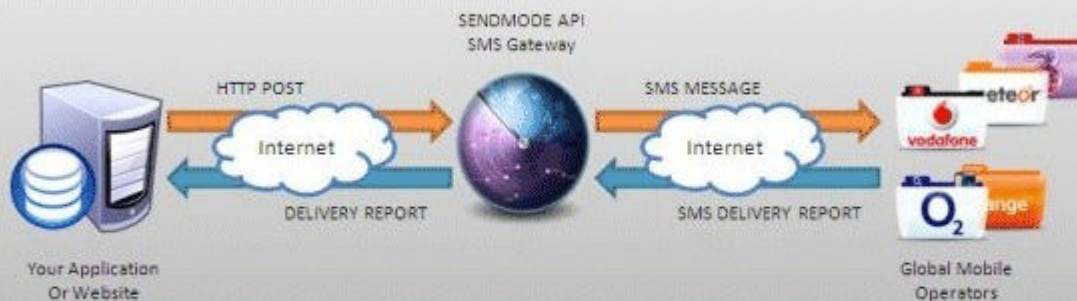
The following symbols need to be replaced if you using the "Get" method.

Symbol	Replace with
&	%26amp;
<	%26lt;
>	%26gt;

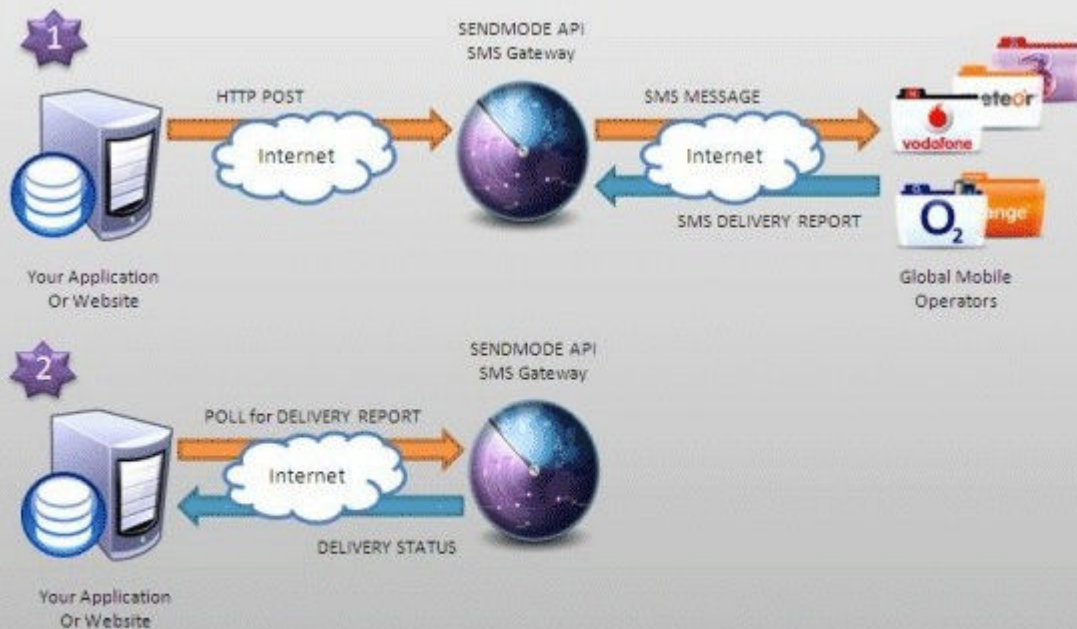
## 2.2 API Diagrams

### SendMode API Diagrams

Sending a HTTP Response to SendMode API and Specifying a URL to Receive Delivery Reports



Sending a HTTP Response to SendMode API and Polling Later for Delivery Reports



## 2.3 Checking your Credits

### Checking your Credits

The function accepts 3 parameters:

- Type (String) = "credits"
- Username (String)
- Password (String)

<http://api.sendmode.co.za/httpost.aspx?Type=credits&username=xxx&password=yyy>

The return object looks like:

```
<api_result>
  <data>
    <credits>xxxxx</credits>
  </data>
  <call_result>
    <result>True</result>
    <error />
  </call_result>
</api_result>
```

Your current credit value will be displayed between the "credits" tag.

## 2.4 Send SMS Individually

To command makes use of parameter driven variables to send sms. The function accepts the following parameters

- Type (String) = "sendparam"
- Username (String)
- Password (String)

<http://api.sendmode.co.za/httpost.aspx?Type=sendparam&username=xxx&password=yyy&numto=1234567890&data1=mytestmsg>

As well as (All entries marked in BLUE are not mandatory):

Parameter	Description	Default	Mandatory
senderid	This determines where the message will come from. Only certain accounts can alter this.	Repliable	NO
Numto	The number you wish to send your data to. This number must start with country code and drop the leading zero for example 3538 for Ireland, 447 for UK.	""	YES
data1	The data you wish to send	""	YES
customerid	The customerID is a field that is populated that has meaning to your system. This field can be returned	""	NO

The output of the following will be defined by the input of the above parameters:

<httpost\_result>

<call\_result>

<result>True</result>

<error></error>

</call\_result>

</httpost\_result>

## 2.5 Send SMS in Batch

If you wish to send in batch, you can send more than one number in the request string by adding a ; between each number for example;

<http://api.sendmode.co.za/httppost.aspx?Type=sendparam&username=xxx&password=yyy&numto=1234567890;222222;3333333;&data1=mytestmsg>

### **Important:**

1. There is a limit of 100 numbers per Batch Send.
2. Each numbers must be correctly formatted as in sending single numbers above, if not correctly formatted the gateway will reject the number and you will be charged.

## 2.6 Delivery Reports Automatically

The sendmode sms gateway has the ability to perform an HTTP Post to a URL of your choice.

So what exactly does that allow you to do? Instead of polling the sms gateway for status updates / replies we can "push" the data to your server in real time. The data is contained in the URL and is URL encoded.

In order for this to work you will require a server (PC) with a public IP or Domain. You will need to host a webpage in a language of your choice which is accessible from the internet.

To setup the domain/ip and page click "Settings" once logged in.

Goto the API tab and add the URL of the program which will be accepting delivery reports.

**Please note:** The domain marked in **RED** is purely for illustration purposes.

### URL arriving at your system

<http://yourdomain.com/API/sentitems.asp?EventID=32433326&Phonenumber=27830123456&DataType=SMS&SentDataTime=15%2FJul%2F2009+143A043A22&Status=DELIVRD&CustomerID=whatever>

Field	Description
EventID	The eventid is returned when calling the API to send your data
Phonenumber	The number the message was sent to
DataType	The options here are SMS, WPUSH or VCARD
Flash	True or False
SentDataTime	The status date and time in the format "dd/MMM/yyyy HH:mm:ss"
Status	Status can be "DELIVRD", "UNDELIV", "EXPIRED", "UNKNOWN"

The process will post the message and read the response (output HTML) of your page.

**\*\*NB\*\*** You need to output the phrase "True" into the HTML as otherwise the sms gateway will post again. 3 retries are attempted.

Most clients will perform the matching based on the "customerid" parameter.

## 2.7 Delivery Reports Polling

The sendmode gateway allows you to poll for delivery status reports at a later date and time .

The parameters required are username and password for validation, and the the customerID if sent with the original SMS sendparam request.

The function accepts 3 parameters:

- Username (String)
- Password (String)
- CustomerID (String)

<http://api.sendmode.co.za/smsGetDeliveryReport.aspx?username=xxxx&password=xxx&customerid=xxx>

Field	Description
CustomerID	CustomerID sent with the SMS sendparam request

The return object looks like:

```
<sms_deliveryreport>
  <data>
    <messageid></messageid>
    <deliverystatus></deliverystatus>
  </data>
  <call_result>
    <result>True</result>
    <error />
  </call_result>
</sms_deliveryreport>
```

Your delivery status will be displayed between the "**deliverystatus**" tag.



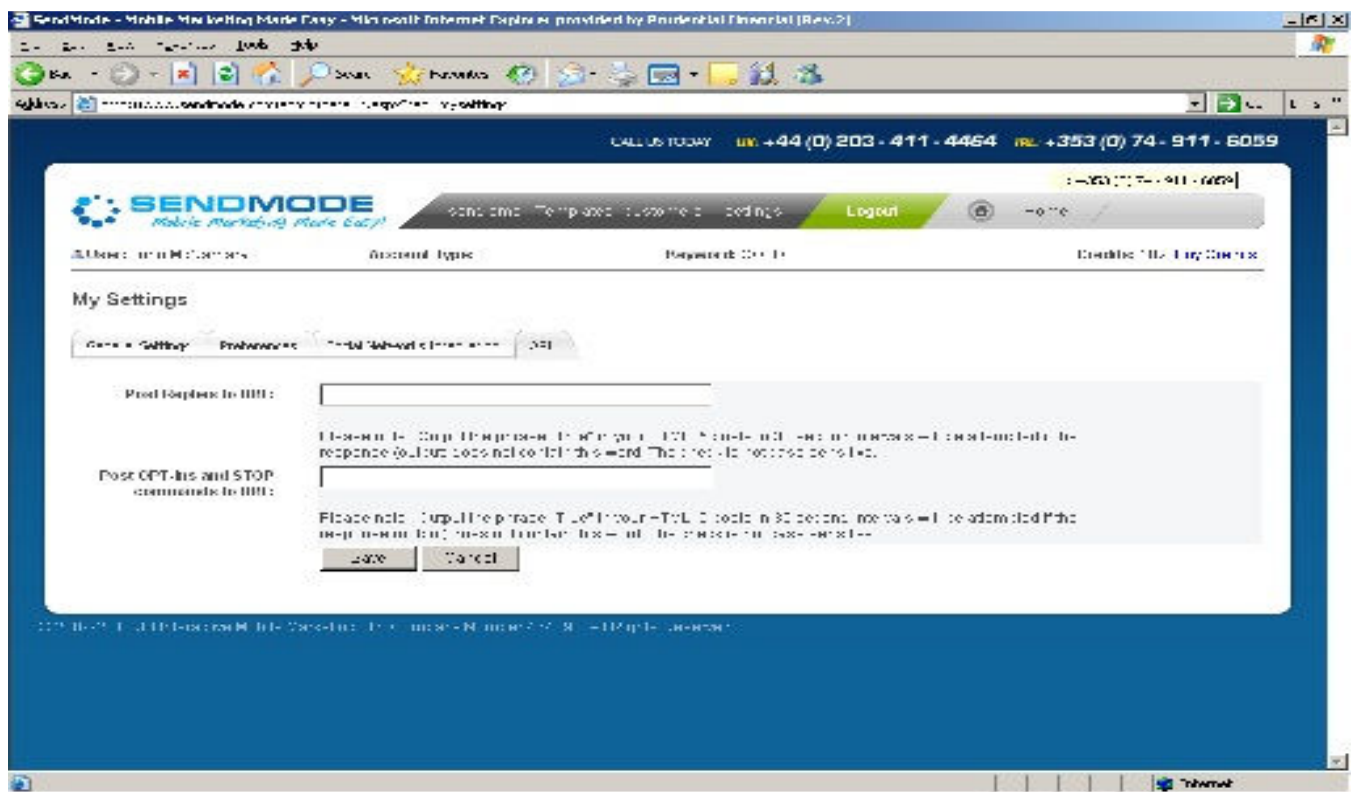
## 2.8 Shortcode Keywords

If you purchase a keyword from SendMode your customers can OPT-In and Opt-out of your customers list by simply sending the keyword to 51444. For example; if your keyword is SENDMODE, you could join the SendMode customer list texting SENDMODE to 51444.

SendMode API has the ability to forward all opt-in commands plus the origination mobile number to a URL of your choosing for processing.

To set this up

1. please log into your SendMode account
2. click on Settings
3. Move to the API tab.
  - a. Click Edit and enter the URL you would like all OPT-IN and STOP commands to be forwarded to.



SendMode will then forward all commands to this URL in the form;

<http://yoururl.com/yourprogram?mobilenumber=35358611111&command=textofcommand>

Field	Description
Mobilenumber	The mobilenumber of the originating request. It will be in its fully qualified  form for example 447828229292 and 3538611111

Command	<p>This is the text sent to the SendMode gateway for example SENDMODE to</p> <p>join the SendMode list or SENDMODE STOP to opt-out, or SENDMODE THE ANSWER IS A if running a competition. Your program will process this command.</p>
---------	---

Please output the phrase "True" in response when we post to your URL. 5 posts in 30 second intervals will be attempted if the response (output) does not contain this word. The check is not case sensitive.

## 3. API Code Examples

### 3.1 ASP Code Example – Sending SMS

```
<%  
message = "Hello this is testing Sendmode gateway"  
message = Server.urlencode(message)  
senderid = "TEST"  
address = "https://api.sendmode.co.za/httppost.aspx"  
username = "yourusername"  
password = "yourpassword"  
numto = "44712345678"  
url = address & "?username=" & username & "&password=" & password & "&data1=" & message & "&senderid=" & senderid  
& "&numto=" & numto & "&type=sendparam"  
  
set xmlhttp = CreateObject("MSXML2.ServerXMLHTTP")  
xmlhttp.open "POST", url, false  
xmlhttp.send ""  
msg = xmlhttp.responseText  
response.write(msg)  
set xmlhttp = nothing  
%>
```

## 3.2 C# Code Example – Sending SMS

```
<%@ Import Namespace="System.Net"%>
<%@ Import Namespace="System.IO"%>
<%@ Import Namespace="System.Web"%>
<script language="C#" runat="server">

void Page_Load(Object Src, EventArgs E) {
myPage.Text = readHtmlPage("http://api.sendmode.co.za/httpPost.aspx");
}
private String readHtmlPage(string url)
{
String result = "";
String message = HttpUtility.UrlEncode("Hello world!");
String strPost = "username=yourusername&password=yourpass&data1=" + message + "&numto=44712345678"
strPost += "&senderid=TEST&type=sendparam";
StreamWriter myWriter = null;

HttpWebRequest objRequest = (HttpWebRequest)WebRequest.Create(url);
objRequest.ContentLength = Encoding.UTF8.GetByteCount(strPost);
objRequest.ContentType = "application/x-www-form-urlencoded";
try{
myWriter = new StreamWriter(objRequest.GetRequestStream());
myWriter.Write(strPost);
}
catch (Exception e)
{
return e.Message;
}
finally {
myWriter.Close();
}

HttpWebResponse objResponse = (HttpWebResponse)objRequest.GetResponse();
using (StreamReader sr = new StreamReader(objResponse.GetResponseStream()))
{
result = sr.ReadToEnd();
// Close and clean up the StreamReader
sr.Close();
}
return result;
}
</>
```

## 3.3 Java Code Example – Sending SMS

```
import java.io.BufferedReader;
import java.io.InputStreamReader;
import java.io.OutputStreamWriter;
import java.net.URL;
import java.net.URLConnection;
import java.net.URLEncoder;

public class SMSSender {

    public String sendSms(String sToPhoneNo,String sMessage) {
        try {
            // Construct data
            String data = "username=" + URLEncoder.encode("username****", "UTF-8");
            data += "& password =" + URLEncoder.encode("password****", "UTF-8");
            data += "&numto=" + URLEncoder.encode(sToPhoneNo, "UTF-8");
            data += "&data1=" + URLEncoder.encode(sMessage, "UTF-8");
            data += "&senderid=" + URLEncoder.encode("senderid", "UTF-8");
            data += "&type=" + URLEncoder.encode("sendparam", "UTF-8");

            // Send data
            URL url = new URL("https://api.sendmode.co.za/httppost.aspx");
            URLConnection conn = url.openConnection();
            conn.setDoOutput(true);

            OutputStreamWriter wr = new OutputStreamWriter(conn.getOutputStream());
            wr.write(data);
            wr.flush();

            // Get the response
            BufferedReader rd = new BufferedReader(new InputStreamReader(conn.getInputStream()));
            String line;
            String sResult="";
            while ((line = rd.readLine()) != null) {
                // Process line...
                sResult=sResult+line+" ";
            }
            wr.close();
            rd.close();
            return sResult;
        } catch (Exception e) {
            System.out.println("Error SMS "+e);
            return "Error "+e;
        }
    }
}
```

## 3.4 PHP Code Example – Sending SMS

```
<?php
```

```
$sms_username = "yourusername";  
$sms_password = "yourpassword";  
$mobilenumber = "353871234567";  
$message = "Hello this is testing Sendmode gateway";  
$senderid = "TEST";
```

```
$url =
```

```
"http://api.sendmode.co.za/httppost.aspx?Type=sendparam&username=".urlencode\(\$sms\_username\)."&password=".urlencode\(\$sms\_password\)."&numto=".urlencode\(\$mobilenumber\)."&data1=".urlencode\(\$message\)."&senderid=".urlencode\(\$senderid\);
```

```
//pr($url) ; die;
```

```
$reply = file_get_contents($url);
```

```
$reply_data = simplexml_load_string($reply);
```

```
$val=$reply_data->call_result->result;
```

```
echo $val;
```

```
?>
```